

State of Wyoming Corner Record

(In compliance with the CORNER PERPETUATION AND FILING ACT, Wyoming Statutes, 1997, Section 33-29-140, et seq., and the Rules and Regulations of the Board of Registration for Professional Engineers and Professional Land Surveyors)

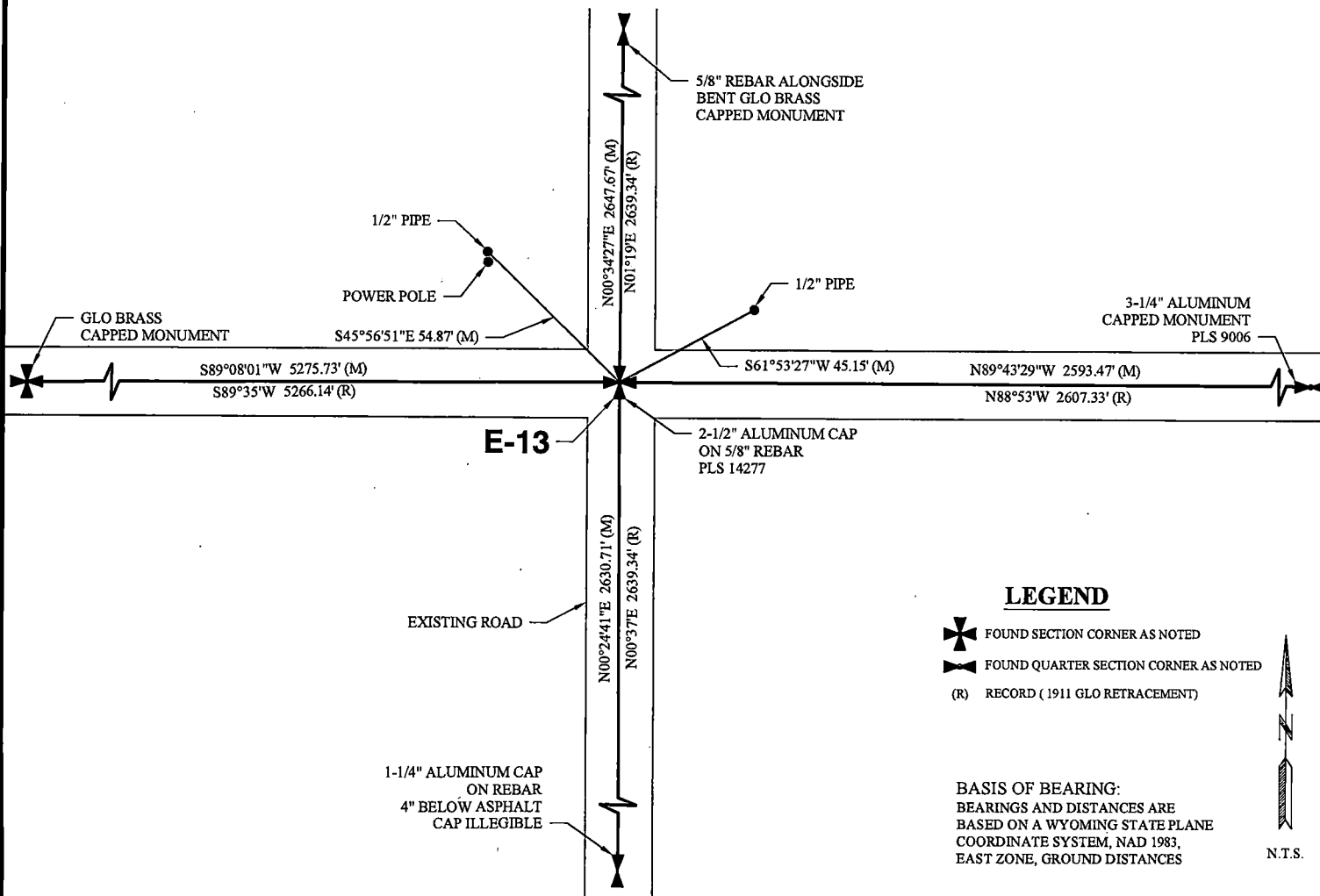
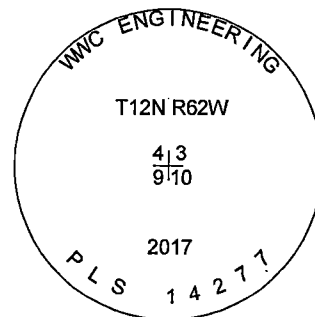
Reverse side of this form may be used if more space is needed.

Record of original survey and citation of source of historical information (if corner is lost or obliterated.) Description of corner monumentation evidence found and/or monument and accessories established to perpetuate the location of this corner. Sketch of relative location of monument, accessories, and reference points with course and distance to adjacent corner(s) (if determined in this survey). Method and rationale for reestablishment of lost or obliterated corner.

EVIDENCE RECORD: 1911 GLO Retracement: N00°37'E between sections 9 & 10, 79.98 chains. Set iron post, 3' long, 2" diameter, with brass cap for corner of sections 3, 4, 9 and 10.

1975 Corner Record LS 495: Found 60 D spike at centerline intersection of roads.

EVIDENCE FOUND: June 2017: Iron post from 1911 GLO Retracement and 60 D spike from 1975 corner record not found. Found an asphalt plug at centerline intersection of roads that fits with witness corners shown on 1975 corner record filed by LS 495. Set a 2 1/2" aluminum cap marked as shown on a 5/8" rebar, 30" long, 3" below asphalt road surface under asphalt plug for corner of sections 3, 4, 9 and 10.



LEGEND

- FOUND SECTION CORNER AS NOTED
- FOUND QUARTER SECTION CORNER AS NOTED
- (R) RECORD (1911 GLO RETRACEMENT)

BASIS OF BEARING:
BEARINGS AND DISTANCES ARE
BASED ON A WYOMING STATE PLANE
COORDINATE SYSTEM, NAD 1983,
EAST ZONE, GROUND DISTANCES

N.T.S.

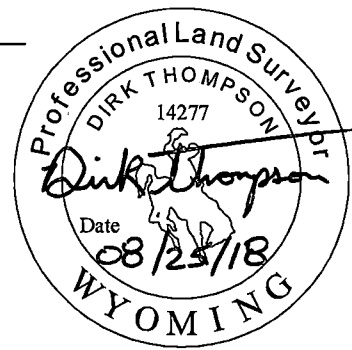
Date of Field Work: June 08, 2017 Office Reference: 2017-135

CROSS INDEX DIAGRAM

1	2	3	4	5	6	7	8	9	10	11	12	13	14	15	16	17	18	19	20	21	22	23	24	25	
A																									A
B																									B
C	6																								C
D		5																							D
E			4																						E
F				3																					F
G	7																								G
H		8																							H
J			9																						J
K				10																					K
L	18																								L
M		17																							M
N			16																						N
O				15																					O
P	19																								P
Q		20																							Q
R			21																						R
S				22																					S
T	30																								T
U		29																							U
V			28																						V
W				27																					W
X	31																								X
Y		32																							Y
Z			33																						Z
				34																					
					35																				
						36																			

Land Surveyor / Firm / Address
Dirk Thompson
WWC Engineering
1849 Terra Avenue
Sheridan, WY 82801
 Telephone: (307) 672-0761

This corner record was prepared by me or under my direction and supervision.
SEAL & SIGNATURE



RECP #: 739881
 RECORDED 10/1/2018 AT 1:32 PM BK# 2598 PG# 315
 Debra K. Lee, CLERK OF LARAMIE COUNTY, WY PAGE 1 OF 1

Corner Name: Northeast Corner Section: 9 T 12N R 62W ; 6TH P.M. Cross-Index No.: E-13
 SBRPEPLS/PLSW: March 1994; PLSW January 1998